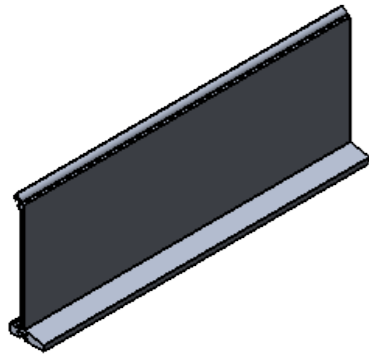


2EB TRUCK BOTTOM RAIL OPTIONS

AVAILABLE IN ANODIZED, POWDER COAT AND MILL FINISHES.

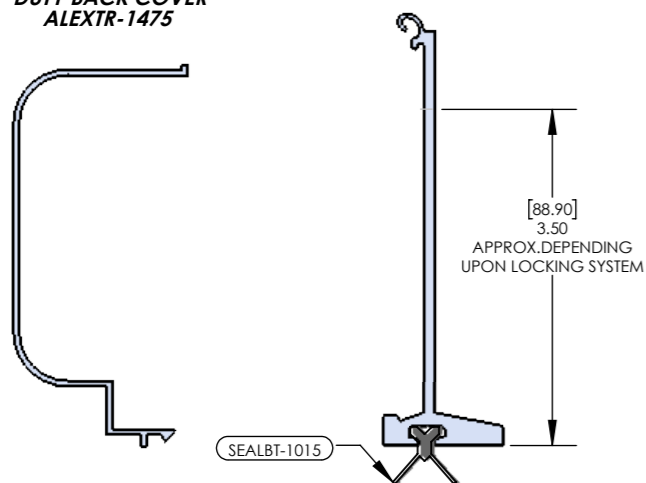
**ALEXTR-1436
HEAVY DUTY
BOTTOM RAIL**



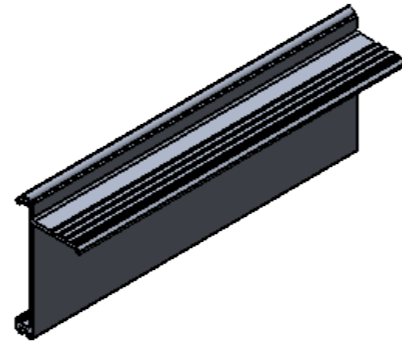
HEAVY DUTY BOTTOM RAIL

- ALLOY-TEMPER: 6063-T5
- OPTIONAL BACK COVER(ALEXTR-1475)
- LOCKING OPTIONS:
 - SS PADDLE HANDLE 2pt. SLAM LOCK(LOCKIT-1043)
 - DOUBLE HANDLE 2pt. SLAM LOCK(LOCKIT-1100)
 - CH FLUSH KEY CYLINDER(LOCKIT-1074)
 - T-HANDLE LOCKING(LOCKIT-1067)
- 2EB BOTTOM RAIL SEAL(SEALBT-1015)

**OPTIONAL HEAVY
DUTY BACK COVER
ALEXTR-1475**



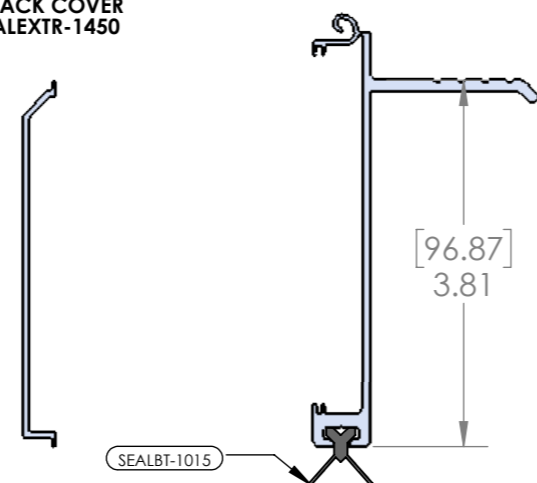
**ALEXTR-1440
LONG LIP
BOTTOM RAIL**



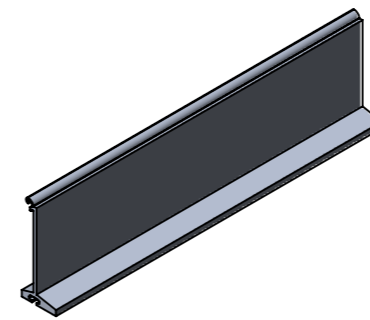
LONG LIP BOTTOM RAIL

- ALLOY-TEMPER: 6063-T5
- OPTIONAL BACK COVER(ALEXTR-1450)
- LOCKING OPTIONS:
 - 2EB BAR LOCK w/STRIKERS
 - CH FLUSH KEY CYLINDER(LOCKIT-1074)
- 2EB BOTTOM RAIL SEAL(SEALBT-1015)

**OPTIONAL: LONG LIP
BACK COVER
ALEXTR-1450**

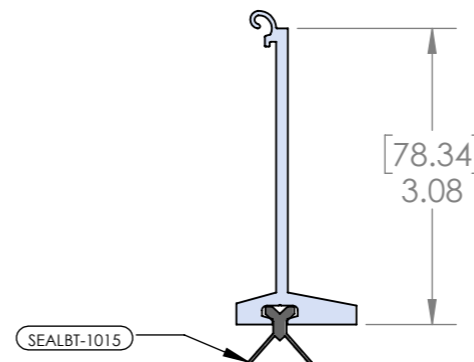


**ALEXTR-1470
MINI-HEAVY DUTY
BOTTOM RAIL**

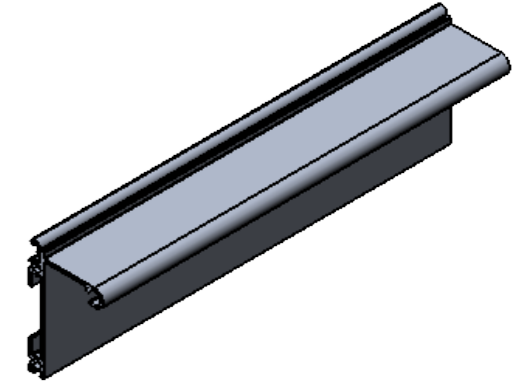


MINI-HEAVY DUTY BOTTOM RAIL

- ALLOY-TEMPER: 6063-T5
- NO BACK COVER OPTION
- LOCKING OPTIONS:
 - CH FLUSH KEY CYLINDER(LOCKIT-1074)
 - T-HANDLE LOCKING(LOCKIT-1067)
- 2EB BOTTOM RAIL SEAL(SEALBT-1015)



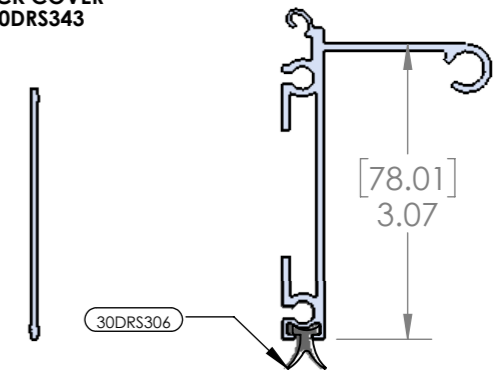
**ALEXTR-1608
ROLLED LIP
BOTTOM RAIL**



ROLLED LIP BOTTOM RAIL

- ALLOY-TEMPER: 6063-T5
- OPTIONAL BACK COVER(30DRS343)
- LOCKING OPTIONS:
 - N30 BAR LOCK w/STRIKERS
 - CH FLUSH KEY CYLINDER(LOCKIT-1074)
- N30 BOTTOM RAIL SEAL(30DRS306)

**OPTIONAL: ROLLED LIP
BACK COVER
30DRS343**



OUR BOTTOM RAILS HAVE MANY OPTIONS:

- CHROME LIFT HANDLES
 - RECESSED FINGER PULLS
 - PULL STRAPS
 - FOR LOCKING SYSTEMS (See locking options page)
- THAT CAN BE INTERCHANGED AND USED IN COMBINATION WITH EACH OTHER TO ASSURE SECURITY.